

**MARKHOUSE
ROAD
E17 8EE**



Price Taylor LLP
Residential

**FREEHOLD
HOUSE**

 **020 7354 7354**

FOR SALE

 4  2  2



Sought After Walthamstow Location **£610,000 Freehold Guide Price**

- Family home
- Main road in Walthamstow
- Gas central heating with radiators and double glazing
- Requires complete refurbishment & modernisation
- Very large garden
- In our opinion may offer opportunity & potential



pricetaylor.com

ACCOMMODATION

Ground Floor Accommodation

Entrance Hall:

Upvc half glazed door, with transom window, with further solid timber door, providing a useful porch, leading to a welcoming carpeted entrance hall. Wall mounted radiator and period features including Victorian cornices, and decorative dentils. Understairs door leading to useful cellar, and electric and gas incoming supplies meters and electric consumer unit.

Reception Room: 3.49m x 3.48m (11'5"x11'5")

Bayed window with upvc double glazed units, and wall mounted radiator. Carpeted floor and attractive cornices and mouldings. With hard wearing laminate floor covering. With connecting double timber doors (not tested) into rear Reception Room.

Reception Room: 3.04m x 3.47m (10'0" x 11'4")

Upvc double glazed window to rear aspect, wall mounted radiator, and laminate flooring.

Kitchen / Diner: 2.89m x 5.73m (9'6" x 18'10")

A range of fitted off white gloss finish wall mounted units and base units, with oven and space for washing machine, and fridge freezer. With tiled splashback and fitted with stainless steel sink and gas hob, with overhead cooker canopy. Upvc double glazed windows to rear aspect and lateral bay to side, and upvc half glazed side door garden.

First Floor Accommodation

Landing

Carpeted staircase leading to carpeted landing, with stairs to roof space.

Bedroom 4.62m x 3.48m (15'2" x 11'5")

Three upvc double glazed windows to front aspect providing much natural light. Cast iron feature fireplace (not tested) provides a focal point to the room. Laminate flooring to match the entrance hall, offering a clean and modern look. Radiator.

Bedroom 2.92m x 3.47m (9'7" x 11'4")

Lateral upvc double glazed window. Laminate flooring to match entrance hall, and attractive cast iron fire place (not tested). Radiator.

Bedroom 2.98m x 3.44m (9'9" x 11'3")

Rear and side dual aspect upvc windows flood light into the room. With laminate flooring matching the entrance hall. Radiator.

Bathroom

A functional three suite bathroom, with upvc double glazed window, and tiled walls. With vinyl floor covering.

Loft Conversion

Bedroom 2.76m x 2.49m (9'1" x 8'2") Measurements taken exclude areas with a head room below 1.5m.

Carpeted floors, with ample under eaves storage space, and good natural light with two double glazed roof windows facing the rear. With built in desk and storage. Radiator. The en-suite is fitted with shower cubicle, wash hand basin and WC.

Exterior

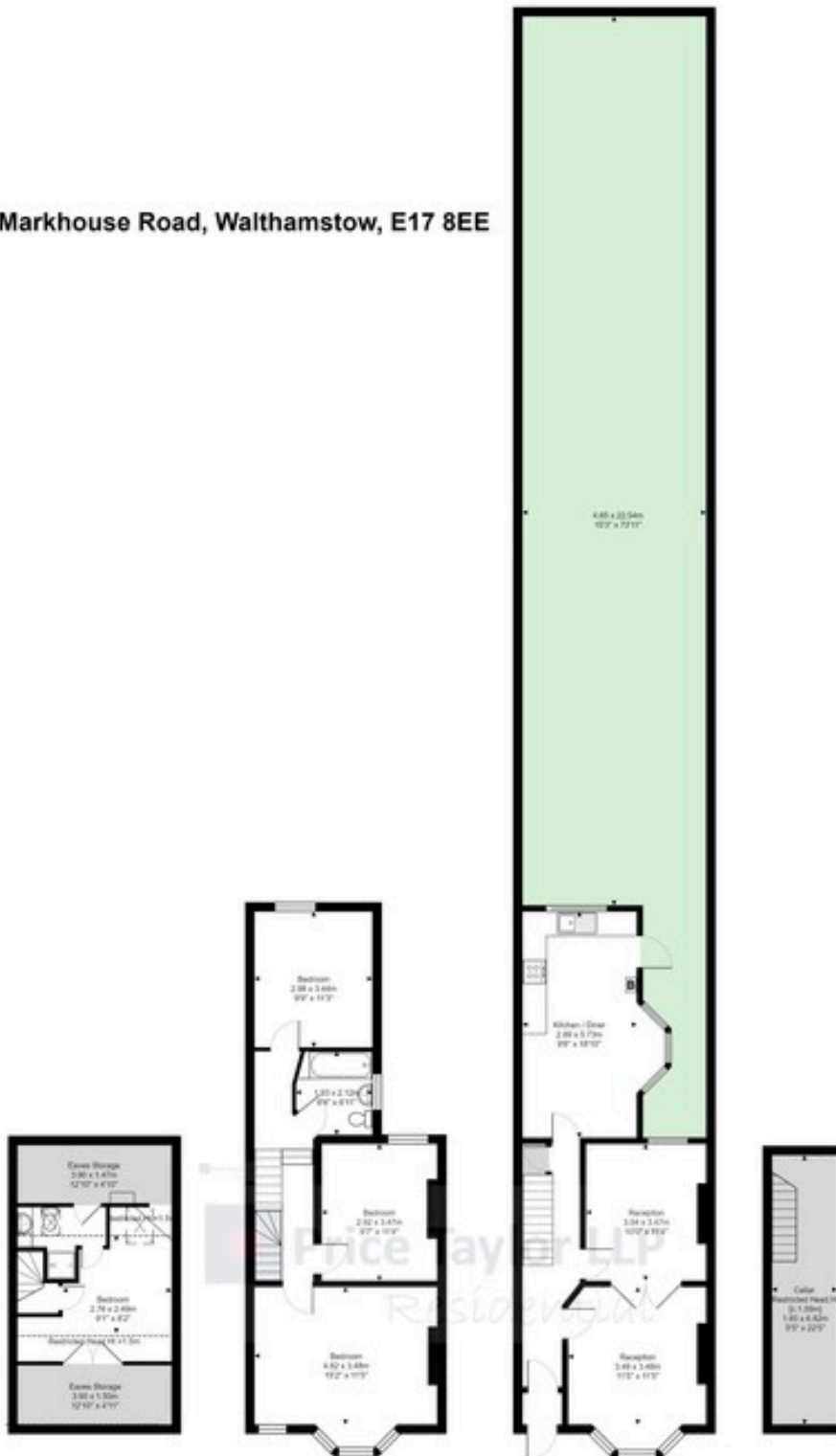
Forecourt

With brick wall, behind a concrete screed paved area, and original Victorian tiled area.

Back garden 4.65m x 22.54m (15'3" x 73'11")

PLANS

321, Markhouse Road, Walthamstow, E17 8EE



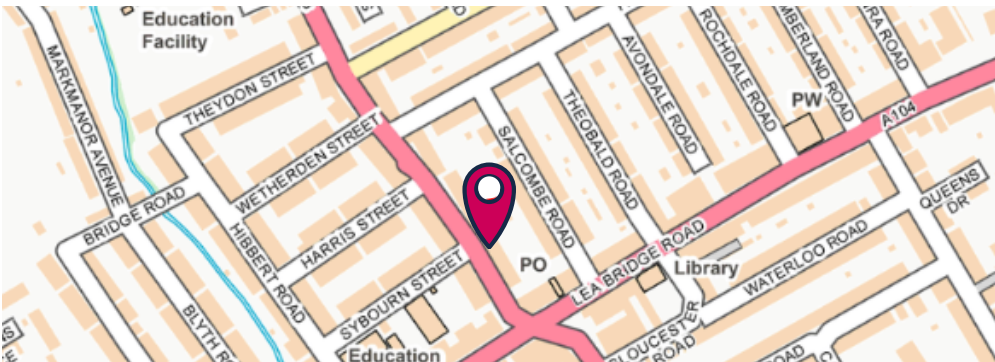
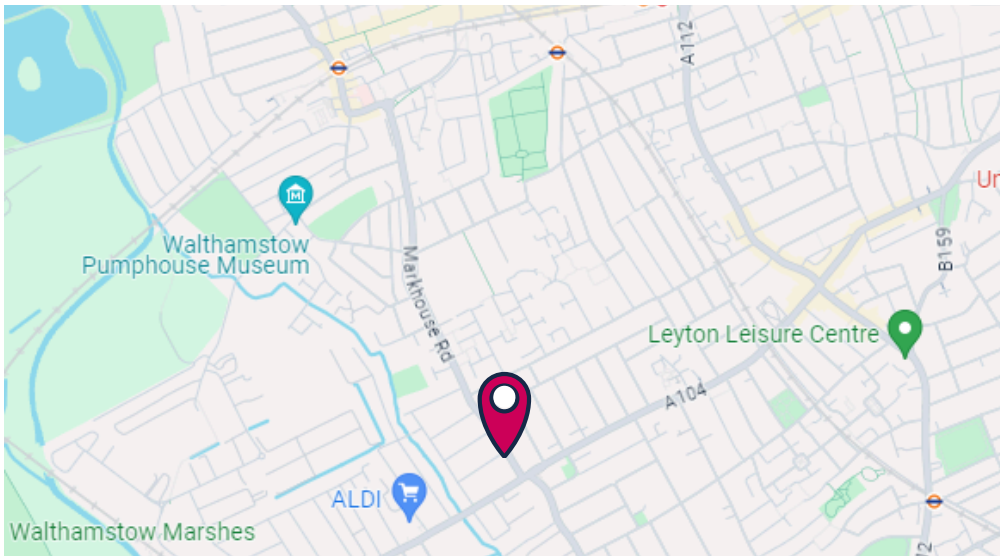
Total Area: 111.2 m² ... 1197 ft² (excluding cellar restricted head H<1.5m), eaves storage, restricted head H<1.5m, restricted H<1.5m)

Cellar Area: 14.1 m² (15192)
Eaves Storage (H<1.5m): 14.4 m² (15592)
Restricted H<1.5m: 8.4m² (9072)

Total Area (including cellar and restricted height area and eaves storage): 141.1 m² (151972)

All measurements are approximate and for display purposes only.

AREA MAP



ENERGY EFFICIENCY RATING

Score	Energy rating	Current	Potential
92+	A		
81-91	B		81 B
69-80	C		
55-68	D	56 D	
39-54	E		
21-38	F		
1-20	G		

GALLERY





COUNCIL TAX

London Borough of Walthamstow C: £2,121.74

ARRANGE A VIEWING

 **020 7354 7354**

 **enquiries@pricetaylor.com**

Ref: 321E17



Important Notice: **1.** These particulars are prepared for guidance purposes only. They are intended to give a fair overall description of the property but are not intended to constitute any part of an offer or contract. **2.** Nothing in these particulars shall be deemed to be a statement that the property is in good structural condition or otherwise no that any services, appliances, equipment or facilities are in good working order. **3.** Whilst all information contained in these particulars whether in the text, plans or photographs is given in good faith, intending purchasers must make their own enquiries as to the accuracy of all matters upon which they intend to rely. **4.** Value Added Tax - All rents, premium, prices or other financial arrangements and charges stated are exclusive of Value Added. **5.** There is a non-refundable administration fee of £60 + VAT to carry out AML checks, KYC and due diligence, as required by HMRC, whether or not the sale proceeds or not. **6.** We advise buyers to take out Home Buyers Protection Insurance. **7.** A buyer that is unrepresented by an RICS member or other property professional is advised of the existence of RICS Buying a Home, and to obtain professional advice prior to agreeing any terms for the property ([link here](https://www.ricsfirms.com/media/1182/buying-a-home_rics-consumer-guide-2022.pdf)). https://www.ricsfirms.com/media/1182/buying-a-home_rics-consumer-guide-2022.pdf **8.** Whilst you are at liberty to use any firm of solicitors of your choice, Price Taylor LLP can, if requested, recommend solicitors. If you choose Cook Taylor Woodhouse solicitors from our list, Price Taylor LLP will receive a £200 + VAT referral fee.